

## Designed for Waterproofing Subcontractors

We know your business thrives in the details. That's why we built The EDGE® to accommodate waterproofing specific details for the most accurate estimating in the industry. Not only is it remarkably intuitive, but it includes extensive databases of waterproofing-specific systems from manufacturers such as Tremco, Carlisle, Grace, Procor, Hypro-Stop, Crystalline and many more.

The EDGE also can produce detailed reports including profit recap reports, alternate pricing, ordering, and job costing, with either separate or combined recaps. The EDGE does exactly what you need it to do. Don't leave anything to chance. Get The EDGE.

### Exclusive Industry-Leading Features for Takeoff and Estimating. One of the Best Takeoff Systems Available!

The EDGE professional estimating software is both robust and powerful, yet so easy to learn that most contractors or professional estimators will be up and running in a week or less.

#### The EDGE features:

- Complete all-in-one takeoff and cost-estimating software solution
- Measure every single detail, including concrete walls, control joints, ventilation pipes, and of course areas of waterproofing needed.
- Setup waterproofing types and configurations for your project, do your takeoff, and The EDGE will calculate a complete tally of materials and production costs based upon the system and the field items for stocking the job.
- Complex calculations for materials and labor costs in real time



# The Professional Choice for Takeoff and Construction Estimating Software



## Cloud Based

Your estimates and data will safely and securely reside in the cloud, allowing both estimators and their teams to work together even when you can't get together.



## Analytics and Reporting

Insight is there whenever you need it. Access to key analytics and reporting are always at your fingertips, giving you the tools you need to make more informed decisions.



## Trade-Specific Solutions

The EDGE is completely customized to your trade, and is intelligent enough to use the same language, manufacturers, and measurements that you use in your business.



## Best Customer Service

Expect the industry's absolute best customer service from sales, support, and training staff who have actual experience in your trade. Count on us as part of your team.



## One-on-One Training

Our estimating software is intuitive, but we offer hands-on training and awesome tech support to ensure your business is able to get the most out of it.



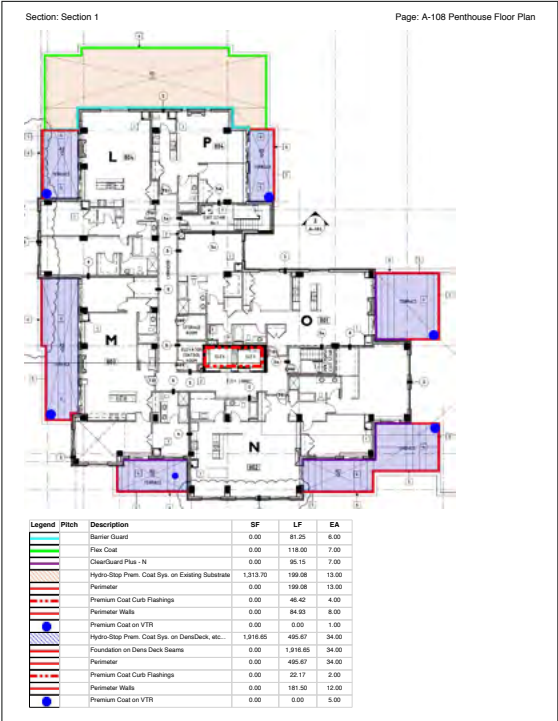
## Industry-Leading Features

Dedicated to innovation and streamlining the estimating process, The EDGE is the only solution that offers cutting-edge features like Smart Labor®, and the ability to automatically update an entire project with a click of the mouse.

# Customizable Reports

## 1. Drawing Report

Gain a competitive edge by submitting with every bid! With the visual representation of what was measured and quantities, Owners/General Contractors can see exactly what's in your bid number and have confidence that your price accurately reflects the job. Or, use to transfer knowledge to the field or other departments ensuring everyone is on the same page.



## 2. Stocking Report

Quickly determine your material needs since this report lists materials broken out by quantity. You can generate this report for your entire job or just a specific phase-area.

Report Name: Stocking Report  
Print Date: 04/28/2020 04:28:28 PM  
Bid: tpo  
Scenario: Scenario 1

Description	Quantity	EU	Ord Qty	Ord Un	Qty Return	Qty Sent
<b>07-500-100-Waterproofing Material</b>						
12" Fabric	1,041.76	LF	11.00	ROLL	_____	_____
40" Fabric	34.74	SQ	7.00	ROLL	_____	_____
6" Fabric	1,593.67	LF	16.00	ROLL	_____	_____
Hydro-Stop Barrier Guard	2.44	SQ	1.00	S-GAL	_____	_____
Hydro-Stop ClearGuard Plus	2.85	SQ	1.00	S-GAL	_____	_____
Hydro-Stop Finish Coat	67.59	SQ	10.00	S-GAL	_____	_____
Hydro-Stop FlexCoat	3.54	SQ	1.00	S-GAL	_____	_____
Hydro-Stop Foundation Coat	143.07	SQ	25.00	S-GAL	_____	_____
Portland Cement	3.90	EA	4.00	EA	_____	_____
Stable Rust Primer	1.37	SQ	1.00	S-GAL	_____	_____
<b>07-500-100-Waterproofing Material</b>						

### 3. Pricing Report

Shop around for the best prices from suppliers. This report lists materials, broken out by per-unit pricing. You can generate this report for your entire job or just by phase.

Report Name: Pricing Fax Report Print Date: 04/28/2020 04:38:25 PM Bid: 1po Scenario: Scenario 1				
Description	OrderQuantity	OrderUnit	Unit Price	PriceUnit
12" Fabric	11.00	ROLL	_____	ROLL
40" Fabric	7.00	ROLL	_____	ROLL
6" Fabric	16.00	ROLL	_____	ROLL
Hydro-Stop Barrier Guard	1.00	5-GAL	_____	5-GAL
Hydro-Stop ClearGuard Plus	1.00	5-GAL	_____	5-GAL
Hydro-Stop Finish Coat	10.00	5-GAL	_____	5-GAL
Hydro-Stop FlexCoat	1.00	5-GAL	_____	5-GAL
Hydro-Stop Foundation Coat	25.00	5-GAL	_____	5-GAL
Portland Cement	4.00	EA	_____	EA
Stable Rust Primer	1.00	5-GAL	_____	5-GAL

### 4. Labor Report

Know exactly how much time was estimated for labor. A must-have for your supervisor or foreman to keep installers on-track. This report can be broken out by units (unit costs and hours) or time (hours and days).

Report Name: Condition Summary Report Print Date: 04/28/2020 04:38:28 PM Bid: 1po Scenario: Scenario 1									
Description	Est Quantity	EU	Material Gross \$	Labor Gross \$	Subcontract Gross \$	Equipment Gross \$	Other Gross \$	Cost Per EU	Price Per EU
<b>A-108 Penthouse Floor Plan</b>									
Barrier Guard	81.25	LF	\$441.18	\$90.17	\$0.00	\$0.00	\$0.00	\$5.07	\$5.43
Flex Coat	119.00	LF	\$569.25	\$71.65	\$0.00	\$0.00	\$0.00	\$4.29	\$5.43
ClearGuard Plus - N	95.15	LF	\$411.13	\$28.89	\$0.00	\$0.00	\$0.00	\$3.66	\$4.62
Hydro-Stop Prem. Coat Sys. on Existing Substrate	1,313.70	SP	\$4,686.02	\$1,504.33	\$0.00	\$0.00	\$254.65	\$3.58	\$4.91
Perimeter	199.08	LF	\$730.46	\$246.24	\$0.00	\$0.00	\$0.00	\$3.96	\$5.01
Premium Coat Curb Flashings	48.42	LF	\$639.24	\$108.70	\$0.00	\$0.00	\$0.00	\$12.74	\$16.11
Perimeter Walls	84.93	LF	\$1,813.16	\$370.05	\$0.00	\$0.00	\$0.00	\$20.32	\$25.71
Premium Coat on VTR	1.00	EA	\$12.56	\$3.65	\$0.00	\$0.00	\$0.00	\$12.82	\$16.21
Hydro-Stop Prem. Coat Sys. on DensDeck, etc...	1,916.85	SP	\$6,936.77	\$2,194.76	\$0.00	\$0.00	\$371.53	\$3.58	\$4.91
Foundation on Dens Deck Seams	632.48	LF	\$624.70	\$330.71	\$0.00	\$0.00	\$0.00	\$1.21	\$1.53
Perimeter	495.67	LF	\$1,868.47	\$613.09	\$0.00	\$0.00	\$0.00	\$3.96	\$5.01
Premium Coat Curb Flashings	22.17	LF	\$305.26	\$51.91	\$0.00	\$0.00	\$0.00	\$12.74	\$16.11
Perimeter Walls	181.60	LF	\$1,009.86	\$219.39	\$0.00	\$0.00	\$0.00	\$5.62	\$7.10
Premium Coat on VTR	1.00	EA	\$52.00	\$16.27	\$0.00	\$0.00	\$0.00	\$12.82	\$16.21
<b>Page Subtotal</b>			<b>\$20,100.85</b>	<b>\$5,841.84</b>	<b>\$0.00</b>	<b>\$0.00</b>	<b>\$626.18</b>		
<b>Job Totals</b>			<b>\$20,100.85</b>	<b>\$5,841.84</b>	<b>\$0.00</b>	<b>\$0.00</b>	<b>\$626.18</b>		

## 5. Recap Report

Project overview summarizing all costs. Includes material and labor costs, and displays equipment and any markups such as taxes, overhead and profit. Use to create a proposal or just view total project costs.

Report Name: Recap Print Date: 4/28/2020 4:38:23 PM Bid: tpo Scenario: Scenario 1							
Description	Net Cost	Markup	Markup \$	Gross Price	Cost Unit	Unit	Hours
<b>Waterproofing</b>							
<b>MATERIAL</b>							
WATERPROOFING MATERIAL	\$15,890.00			\$15,890.00	\$4.92	SFWP	
Subtotal Material	\$15,890.00			\$15,890.00	\$4.919/SFWP		
Total Material	\$15,890.00			\$15,890.00	\$4.919/SFWP		
<b>LABOR</b>							
WATERPROOFING LABOR	\$4,618.05			\$4,618.05	\$1.43	SFWP	115.45
Subtotal Labor	\$4,618.05			\$4,618.05	\$1.430/SFWP		115.45
Total Labor	\$4,618.05			\$4,618.05	\$1.430/SFWP		115.45
<b>OTHER</b>							
WP OTHER	\$495.00			\$495.00	\$0.15	SFWP	
Subtotal Other	\$495.00			\$495.00	\$0.153/SFWP		
Total Other	\$495.00			\$495.00	\$0.153/SFWP		
Subtotal Tax Classes	\$21,003.05			\$21,003.05	\$8.502/SFWP		115.45
OVERHEAD	10.00%			\$2,100.31	\$0.65	SFWP	
Subtotal				\$23,103.36	\$7.152/SFWP		
PROFIT	15.00%			\$3,465.50	\$1.07	SFWP	
<b>CONTRACT AMOUNT</b>	\$21,003.05			<b>\$26,568.86</b>	<b>\$8.22</b>	<b>SFWP</b>	
<b>SELLING PRICE</b>				<b>\$26,568.86</b>	<b>\$8.22</b>	<b>SFWP</b>	
Profit To Sell 13.04%							
Gross Markup to sell 20.95%							
Total SFWP 3230.35							
Total Hours 115.45							
SFWP/Hour 27.98							
Hours/SFWP 0.04							
User Code	Description	CSize	CDays	Quantity	Unit	Units/CDay	
07-500-200	Waterproofing Labor	1	14.43	3230.35	SFWP	223.84	

## 6. Consolidated Report

Create a budget from this report since it breaks down all materials and labor by amount and cost.

Report Name: Budget Report Print Date: 04/28/2020 04:38:23 PM Bid: tpo Scenario: Scenario 1							
Description	Quantity	EU	Ord Qty	Ord Un	Unit Price	Prc Un	Net Cost
<b>Waterproofing (Subdivision 07-500-000)</b>							
<b>07-500-100-Waterproofing Material</b>							
12" Fabric	1,041.76	LF	11.00	ROLL	\$95.00	ROLL	\$1,045.00
40" Fabric	34.74	SQ	7.00	ROLL	\$140.00	ROLL	\$980.00
6" Fabric	1,593.67	LF	16.00	ROLL	\$60.00	ROLL	\$960.00
Hydro-Stop Barrier Guard	2.44	SQ	1.00	5-GAL	\$250.00	5-GAL	\$250.00
Hydro-Stop ClearGuard Plus	2.85	SQ	1.00	5-GAL	\$325.00	5-GAL	\$325.00
Hydro-Stop Finish Coat	67.59	SQ	10.00	5-GAL	\$600.00	5-GAL	\$6,000.00
Hydro-Stop FlexCoat	3.54	SQ	1.00	5-GAL	\$450.00	5-GAL	\$450.00
Hydro-Stop Foundation Coat	143.07	SQ	25.00	5-GAL	\$225.00	5-GAL	\$5,525.00
Portland Cement	3.90	EA	4.00	EA	\$7.50	EA	\$30.00
Stable Rust Primer	1.37	SQ	1.00	5-GAL	\$225.00	5-GAL	\$225.00
<b>07-500-100-Waterproofing Material</b>							<b>\$15,890.00</b>
<b>07-500-200-Waterproofing Labor</b>							
12" Fabric	1,041.76	LF	11.58	HOURS	\$40.00	HOURS	\$463.01
6" Fabric	1,593.67	LF	13.28	HOURS	\$40.00	HOURS	\$531.22
Brush 1 Base Coat of Hydro-Stop Barrier Guard at Conc Wall	243.75	SF	0.98	HOURS	\$40.00	HOURS	\$39.00
Brush 1 Base Coat of Hydro-Stop FlexCoat at Conc Wall	354.00	SF	1.42	HOURS	\$40.00	HOURS	\$56.64
Brush 1 Base Coat of Hydro-Stop Foundation Coat at Conc Wall	316.25	SF	1.26	HOURS	\$40.00	HOURS	\$50.60
Brush 1 Mid Coat of Stable Rust Primer at Curb	137.17	SF	0.86	HOURS	\$40.00	HOURS	\$34.29
Brush 2 Base Coat of Hydro-Stop Foundation Coat at Roofs	3,230.35	SF	14.36	HOURS	\$40.00	HOURS	\$574.28
Brush 2 Base Coat of Hydro-Stop Foundation Coat at VTR	24.00	SF	0.24	HOURS	\$40.00	HOURS	\$9.60
Brush 2 Finish Coat of Hydro-Stop Finish Coat at VTR	12.00	SF	0.06	HOURS	\$40.00	HOURS	\$2.40
Brush 3 Base Coat of Hydro-Stop Foundation Coat at Conc Wall	694.75	SF	3.47	HOURS	\$40.00	HOURS	\$138.95
Brush 4 Base Coat of Hydro-Stop Foundation Coat at Conc Wall	849.29	SF	5.66	HOURS	\$40.00	HOURS	\$226.48
Brush 4 Base Coat of Hydro-Stop Foundation Coat at Curb	137.17	SF	1.10	HOURS	\$40.00	HOURS	\$43.89
Brush 8 Base Coat of Hydro-Stop Foundation Coat at Conc Wall	181.50	SF	0.81	HOURS	\$40.00	HOURS	\$32.27
Install 1 Liner of 40" Fabric at Conc Wall	243.75	SF	0.61	HOURS	\$40.00	HOURS	\$24.38
Install 1 Liner of 40" Fabric at Roofs	3,230.35	SF	43.07	HOURS	\$40.00	HOURS	\$1,722.85
Powerwashing (WP)	3,230.35	SF	8.08	HOURS	\$40.00	HOURS	\$323.03
Roll 2 Finish Coat of Hydro-Stop Finish Coat at Curb	137.17	SF	0.46	HOURS	\$40.00	HOURS	\$18.29
Roll 2 Finish Coat of Hydro-Stop Finish Coat at Roofs	3,230.35	SF	7.60	HOURS	\$40.00	HOURS	\$304.03

Bid sharp. Build sharp.®

561-276-9100 | www.estimateingedge.com

© 2022 The Estimating Edge LLC. All rights reserved. The Estimating Edge, the E logo, the EDGE, Bid sharp. Build sharp., and Smart Labor are registered trademarks of The Estimating Edge. Other products or services may be trademarks or registered trademarks of their respective companies. 0522