

Designed for Fireproofing Subcontractors

The EDGE® is an all-in-one solution for takeoff and estimating, but not a “one size fits all” solution like other estimating software products. The EDGE was built specifically for Fireproofing subcontractors by professionals with experience and a deep understanding of the trade.

Not only is it remarkably intuitive, but the customizable fireproofing databases are extensively loaded with trade-specific manufacture, including steel shapes, UL designs, and formulas that auto-assign thicknesses and allow shaped to be copied from one area to another.

Exclusive Industry-Leading Features for Takeoff and Estimating. One of the Best Takeoff Systems Available!

The EDGE professional estimating software is both robust and powerful, yet so easy to learn that most contractors or professional estimators will be up and running in a week or less.



The EDGE features:

- Complete all-in-one takeoff and cost-estimating software solution
- Provides UL design and board footage calculations based on steel takeoffs, so you can accurately stock the precise quantity of bags needed for every job.
- Customizable fireproofing database with manufacturer-specific products for W.R. Grace, Isolatek, Carboline and others with their related UL Designs and thickness. Plus, the database contains AISC steel shapes, in both imperial and metric, with W/D and heated perimeters.
- Generates Spray Charts (or color ups) of your blueprints with lines color-coded by thickness to be sprayed, and a legend for what thickness each color represents. This makes production work by your field crew a breeze.
- Generate shop drawings quickly and easily, saving days of estimating time by color-coding your blueprints by steel type, UL design, Hourly Rating, and thickness.
- Produce detailed reports, including profit recap reports, alternate pricing, ordering, and job costing.
- Complex calculations for materials and labor costs in real time

The Professional Choice for Takeoff and Construction Estimating Software



Cloud Based

Your estimates and data will safely and securely reside in the cloud, allowing both estimators and their teams to work together even when you can't get together.



Analytics and Reporting

Insight is there whenever you need it. Access to key analytics and reporting are always at your fingertips, giving you the tools you need to make more informed decisions.



Trade-Specific Solutions

The EDGE is completely customized to your trade, and is intelligent enough to use the same language, manufacturers, and measurements that you use in your business.



Best Customer Service

Expect the industry's absolute best customer service from sales, support, and training staff who have actual experience in your trade. Count on us as part of your team.



One-on-One Training

Our estimating software is intuitive, but we offer hands-on training and awesome tech support to ensure your business is able to get the most out of it.



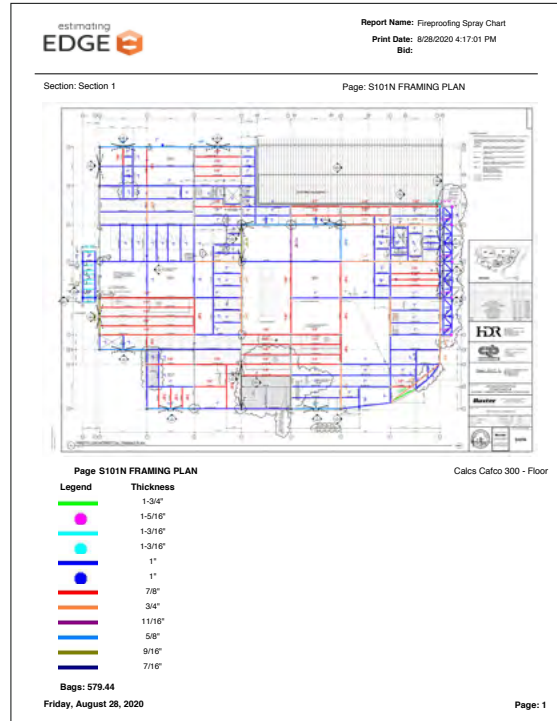
Industry-Leading Features

Dedicated to innovation and streamlining the estimating process, The EDGE is the only solution that offers cutting-edge features like Smart Labor[®], and the ability to automatically update an entire project with a click of the mouse.

Customizable Reports

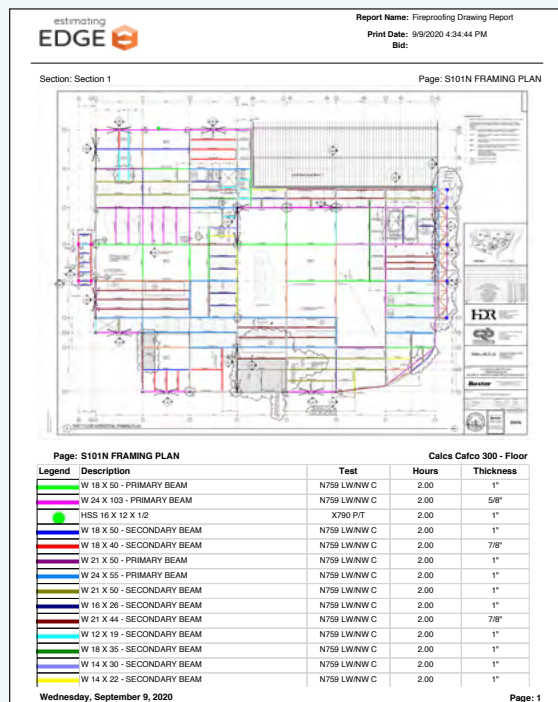
1. Spray Chart Report

A user favorite, this color-coded drawing provides a floor-by-floor breakdown. Use to transfer knowledge to the field so they know the steel thickness and spray thickness for each surface type.



2. Fireproofing Drawing Report

Another user favorite. View the color-coded drawing and the thickness required for each steel type, the test and hourly rating for each. Use to submit to General Contractors or even fire inspectors.



3. Totals Report

An overall summary that displays a page-by-page breakdown of the surface area, board feet/bag, waste percentage, total board feet and total bags needed for each separate steel type. Use to create a proposal or just view total project costs.

estimating EDGE		Report Name: Fireproofing Totals Report Print Date: 8/28/2020 4:18:35 PM Bid:					
Scenario 1							
Section	Page	Surface Type	Surface Area	BF/Bag	Waste %	BF	Bags
Section 1	S101N FRAMING PLAN	Primary Beam	11,206.22	44.00	0.00	9,792.91	222.57
		Tube	1,784.22	44.00	0.00	2,046.90	46.52
		Secondary Beam	10,449.29	44.00	0.00	10,148.42	230.65
		Misc	37.98	44.00	0.00	82.28	1.87
		Columns	0.00	44.00	0.00	0.00	0.00
		Box Columns	0.00	44.00	0.00	0.00	0.00
		Box Beam	0.00	44.00	0.00	0.00	0.00
		Pipe	0.00	44.00	0.00	0.00	0.00
		Deck	0.00	44.00	0.00	3,425.02	0.00
		Bar Joists	0.00	44.00	0.00	0.00	0.00
			23,477.70			25,495.52	501.60
			23,477.70			25,495.52	501.60
Scenario Total:			23,477.70			25,495.52	501.60

4. Fireproofing Report

A floor-by-floor breakdown of each surface area showing the UL design details that were used during takeoff. Details include the fire tests, steel types and thickness including the thickness being sprayed and labor.

estimating EDGE		Acme 1301 N. Congress Ave, Suite 400 Boynton Beach, FL 33426 P: 561-276-9100 F: 561-276-9492		Report Name: Fireproofing Report Print Date: 8/28/2020 4:13:20 PM Bid: UB Vascular Institute			
Scenario 1							
Section: Section 1							
Page: S101N FRAMING PLAN							
Calcs: Calcs Calco 300 - Floor							
Column: Y729 (cols)	2.00	Flute Fill: 1.50 3"		Thick Calc: Net			
Primary: N759 Unrest NW/LW Corug	2.00	BJ Factor: 1.00		Round To: 1/16"			
Secondary: N759 Unrest NW/LW Corug	2.00	Joist FW: 0"					
Misc: X790 (cols)	2.00	Joist Thick: 0"					
Pipe: X790 (pipe/tube)	2.00	Deck Thick: 0"		Bags/Day: 100.00			
Tube: X790 (pipe/tube)	2.00	Bond Thick: 0"		# of Days: 5.39			
Joist: N761 Unrestrained	2.00	Deduct FW?: No					
Deck: D759 Unrestrained Fluted	2.00						

Surface Type	Surface Area	BF/Bag	BF w/o Waste	Waste %	BF	Bags
Columns	0.00	44.00	0.00	0.00	0.00	0.00
Box Columns	0.00	44.00	0.00	0.00	0.00	0.00
Primary Beam	11,206.22	44.00	9,792.91	0.00	9,792.91	222.57
Secondary Beam	10,449.29	44.00	10,148.42	0.00	10,148.42	230.65
Misc	37.98	44.00	82.28	0.00	82.28	1.87
Box Beam	0.00	44.00	0.00	0.00	0.00	0.00
Pipe	0.00	44.00	0.00	0.00	0.00	0.00
Tube	1,784.22	44.00	2,046.90	0.00	2,046.90	46.52
Bar Joists	0.00	44.00	0.00	0.00	0.00	0.00
Deck	0.00	44.00	3,425.02	0.00	3,425.02	0.00
Totals	23,477.70		25,495.52		25,495.52	501.60

estimating EDGE		Acme 1301 N. Congress Ave, Suite 400 Boynton Beach, FL 33426 P: 561-276-9100 F: 561-276-9492		Report Name: Fireproofing Report Print Date: 8/28/2020 4:13:20 PM Bid: UB Vascular Institute			
Description		Quantity	Order Unit				
Calco 300 44.00 BF/Bag		540.00	BAGS				
Freight 700 Bags/Truck		1.00	TRUCK				
3 Men 100.00 Bg/Day		6.00	CRWDAY				
Unload Bag Goods		4.49	MDAYS				
Patch & Clean Labor		2.97	MDAYS				
Gas & Oil - 100.00 Bg/Day		6.00	DAYS				
Equipment Rental 100.00 Bg/Day		6.00	DAYS				
Pallet 1:33		17.00	EACH				
Extended Set		6.00	BAG				
Quick Set 1:19		29.00	BAG				

Fire Test	Hours	Test Beam	WD or AP	Thickness
Y729 C	2.00	W69C	0.338	1-9/16"
	2.00	W612C	0.448	1-7/16"
	2.00	W616C	0.584	1-5/16"
	2.00	W828C	0.688	1-1/4"
	2.00	W1049C	0.840	1-1/8"
	2.00	W12106C	1.470	13/16"
	2.00	W14233C	2.546	1/2"
	2.00	W14730C	6.759	1/4"
N759 LW/NW C	2.00	W828P	0.819	13/16"
X790 C	2.00	W69C	0.338	1-9/16"
	2.00	W612C	0.448	1-7/16"
	2.00	W616C	0.584	1-5/16"
	2.00	W828C	0.688	1-1/4"
	2.00	W1049C	0.840	1-1/8"
	2.00	W12106C	1.470	13/16"
	2.00	W14233C	2.546	1/2"
	2.00	W14730C	6.759	1/4"
X790 P/T	2.00	AP .18	0.180	1-7/16"
	2.00	AP .22	0.220	1-3/8"
	2.00	T44516	0.288	1-1/8"

5. Thickness Schedule Report

Especially helpful for the field, view each steel part by the thickness. Can also be used as a shop drawing for permitting.

estimating EDGE		Report Name: Fireproofing Thickness Schedule Print Date: 8/28/2020 4:17:43 PM Bid:		
Section: Section 1				
Page: S101N FRAMING PLAN		Calcs Catco 300 - Floor		
Description	Test	Hours	Thickness	Adj Thickness
W 18 X 50 - PRIMARY BEAM	N759 Unrest NWLW Corng	2.00	13/16"	1"
W 24 X 103 - PRIMARY BEAM	N759 Unrest NWLW Corng	2.00	5/8"	
HSS 16 X 12 X 1/2	X790 (ppelube)	2.00	15/16"	1"
W 18 X 50 - SECONDARY BEAM	N759 Unrest NWLW Corng	2.00	13/16"	
W 18 X 40 - SECONDARY BEAM	N759 Unrest NWLW Corng	2.00	7/8"	
W 12 X 19 - SECONDARY BEAM	N759 Unrest NWLW Corng	2.00	1-1/16"	1"
W 21 X 50 - PRIMARY BEAM	N759 Unrest NWLW Corng	2.00	13/16"	1"
W 24 X 55 - PRIMARY BEAM	N759 Unrest NWLW Corng	2.00	13/16"	1"
W 21 X 50 - SECONDARY BEAM	N759 Unrest NWLW Corng	2.00	13/16"	1"
W 16 X 26 - SECONDARY BEAM	N759 Unrest NWLW Corng	2.00	1"	
W 21 X 44 - SECONDARY BEAM	N759 Unrest NWLW Corng	2.00	7/8"	
W 12 X 19 - SECONDARY BEAM	N759 Unrest NWLW Corng	2.00	1-1/16"	1"
W 18 X 35 - SECONDARY BEAM	N759 Unrest NWLW Corng	2.00	15/16"	1"
W 14 X 30 - SECONDARY BEAM	N759 Unrest NWLW Corng	2.00	15/16"	1"
W 14 X 22 - SECONDARY BEAM	N759 Unrest NWLW Corng	2.00	1-1/16"	1"
W 24 X 55 - SECONDARY BEAM	N759 Unrest NWLW Corng	2.00	13/16"	1"
HSS 16 X 4 X 1/2 LENGTH	X790 (ppelube)	2.00	15/16"	1"
W 16 X 26 - PRIMARY BEAM	N759 Unrest NWLW Corng	2.00	1"	
W 8 X 10 - SECONDARY BEAM	N759 Unrest NWLW Corng	2.00	1-3/16"	
HSS 8 X 8 X 1/2	X790 (ppelube)	2.00	1"	
W 18 X 46 - SECONDARY BEAM	N759 Unrest NWLW Corng	2.00	13/16"	1"
W 18 X 40 - PRIMARY BEAM	N759 Unrest NWLW Corng	2.00	7/8"	
W 21 X 132 - PRIMARY BEAM	N759 Unrest NWLW Corng	2.00	9/16"	
W 21 X 44 - PRIMARY BEAM	N759 Unrest NWLW Corng	2.00	7/8"	
W 12 X 26 - SECONDARY BEAM	N759 Unrest NWLW Corng	2.00	1"	
W 30 X 90 - PRIMARY BEAM	N759 Unrest NWLW Corng	2.00	3/4"	
HSS 16 X 12 X 1/2 LENGTH	X790 (ppelube)	2.00	15/16"	1"
HSS 16 X 16 X 5/8 LENGTH	X790 (ppelube)	2.00	13/16"	1"
W 27 X 84 - PRIMARY BEAM	N759 Unrest NWLW Corng	2.00	3/4"	
W 16 X 31 - SECONDARY BEAM	N759 Unrest NWLW Corng	2.00	15/16"	1"
W 24 X 76 - PRIMARY BEAM	N759 Unrest NWLW Corng	2.00	3/4"	
W 30 X 99 - PRIMARY BEAM	N759 Unrest NWLW Corng	2.00	11/16"	
W 24 X 68 - PRIMARY BEAM	N759 Unrest NWLW Corng	2.00	3/4"	
W 30 X 116 - PRIMARY BEAM	N759 Unrest NWLW Corng	2.00	5/8"	
HSS 12 X 6 X 3/8 LENGTH	X790 (ppelube)	2.00	1-1/8"	1"
W 30 X 108 - PRIMARY BEAM	N759 Unrest NWLW Corng	2.00	11/16"	1"

Friday, August 28, 2020 Page: 1

6. Adjustment Report

When performing a takeoff, The EDGE automatically calculates a thickness but sometimes you will need to adjust. This report displays all items, the original calculations and the user adjusted calculation.

estimating EDGE		Report Name: Fireproofing Adjustments Print Date: 8/28/2020 4:16:09 PM Bid:		
W 30 X 108 - PRIMARY BEAM	11/16"	1"	217.22	318.15
C 10 X 15.3 - AM STD	1-3/4"		82.28	
W 30 X 108 - PRIMARY BEAM	11/16"	1"	400.83	587.06
HSS 4 X 4 X 5/16	1-5/16"		155.04	
HSS 5 X 5 X 3/8	1-3/16"		32.63	
HSS 12 X 8 X 1/2 LENGTH	15/16"	1"	85.06	91.26
HSS 4 X 4 X 1/2 LENGTH	1"		213.90	
W 12 X 30 - SECONDARY BEAM	15/16"	1"	323.57	348.10
W 21 X 166 - SECONDARY BEAM	7/16"		137.73	
			20,303.93	22,070.50

BF Added: 1,766.57, Bags Added: 40.15, Days Added: 0.40

estimating EDGE		Section: Section 1		
Page: S101N FRAMING PLAN		Calcs Catco 300 - Floor		
Description	Thickness	Adj Thickness	BF	Adj BF
W 18 X 50 - PRIMARY BEAM	13/16"	1"	1,066.10	1,320.55
W 24 X 103 - PRIMARY BEAM	5/8"		1,004.45	
HSS 16 X 12 X 1/2	15/16"	1"	63.60	68.13
W 18 X 50 - SECONDARY BEAM	13/16"	1"	373.83	483.05
W 18 X 40 - SECONDARY BEAM	7/8"		755.86	
W 12 X 19 - SECONDARY BEAM	1-1/16"	1"	632.87	593.65
W 21 X 50 - PRIMARY BEAM	13/16"	1"	608.30	753.25
W 24 X 55 - PRIMARY BEAM	13/16"	1"	1,326.49	1,641.60
W 21 X 50 - SECONDARY BEAM	13/16"	1"	1,326.63	1,642.76
W 16 X 26 - SECONDARY BEAM	1"		617.63	
W 21 X 44 - SECONDARY BEAM	7/8"		2,843.86	
W 12 X 19 - SECONDARY BEAM	1-1/16"	1"	305.70	286.75
W 18 X 35 - SECONDARY BEAM	15/16"	1"	347.89	371.94
W 14 X 30 - SECONDARY BEAM	15/16"	1"	147.70	157.95
W 14 X 22 - SECONDARY BEAM	1-1/16"	1"	272.36	255.60
W 24 X 55 - SECONDARY BEAM	13/16"	1"	711.61	880.65
HSS 16 X 4 X 1/2 LENGTH	15/16"	1"	564.74	605.97
W 16 X 26 - PRIMARY BEAM	1"		62.77	
W 8 X 10 - SECONDARY BEAM	1-3/16"		100.70	
HSS 8 X 8 X 1/2	1"		160.53	
W 18 X 46 - SECONDARY BEAM	13/16"	1"	248.74	308.27
W 18 X 40 - PRIMARY BEAM	7/8"		855.99	
W 21 X 132 - PRIMARY BEAM	9/16"		167.96	
W 21 X 44 - PRIMARY BEAM	7/8"		1,162.79	
W 12 X 26 - SECONDARY BEAM	1"		94.56	
W 30 X 90 - PRIMARY BEAM	3/4"		288.08	
HSS 16 X 12 X 1/2 LENGTH	15/16"	1"	302.11	323.63
HSS 16 X 16 X 5/8 LENGTH	13/16"	1"	267.29	332.75
W 27 X 84 - PRIMARY BEAM	3/4"		152.48	
W 16 X 31 - SECONDARY BEAM	15/16"	1"	272.45	291.36
W 24 X 76 - PRIMARY BEAM	3/4"		203.50	
W 30 X 99 - PRIMARY BEAM	11/16"		115.85	
W 24 X 68 - PRIMARY BEAM	3/4"		1,652.53	
W 30 X 116 - PRIMARY BEAM	5/8"		105.88	
HSS 12 X 6 X 3/8 LENGTH	1-1/8"	1"	71.85	63.05

* This report does not take Flute Fill Factors or Flange Width Deducts into account.
Friday, August 28, 2020 Page: 1

Bid sharp. Build sharp.®

561-276-9100 | www.estimateingedge.com

© 2022 The Estimating Edge LLC. All rights reserved. The Estimating Edge, the E logo, The EDGE, Bid sharp, Build sharp., and Smart Labor are registered trademarks of The Estimating Edge. Other products or services may be trademarks or registered trademarks of their respective companies. 0522